

SUPER NIKKO-RACK

Highest efficiency, highest performance, and highest quality magazine in the industry.

- ▶ Quick width adjustment in less than 5 seconds. (Rack & Pinion with new preinstalled Ramp System)
- ▶ Durable plastic base. 30% stronger than the industry standard.
- ▶ Lead free process compatible. We offer two types of cardguides; R-type (PCB temperatures up to 135°C) and SR-type (up to 165°C) and unique card guide design.

Caution: These temperatures apply only to the cardguides. Magazines should not be placed in the oven.

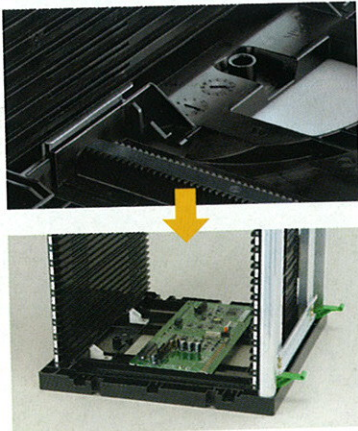
- ▶ Faster assembly. 70% faster due to easier assembly.
 - ▶ Reversible type.
- *T-type: Not Reversible

Options

- Spring type stopper bars
- Numbering labels (Please contact us upon ordering since some products can not be equipped with numbering labels.)
- Corresponding 400mm length Card guide (longer than the base length)

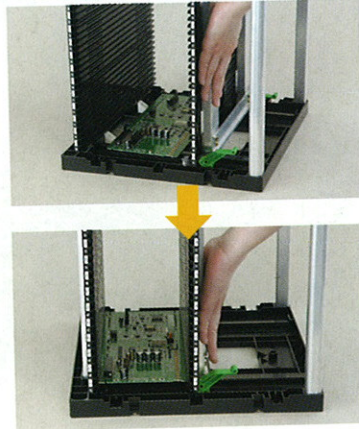


PCB quick-width adjustment in less than 5 Seconds



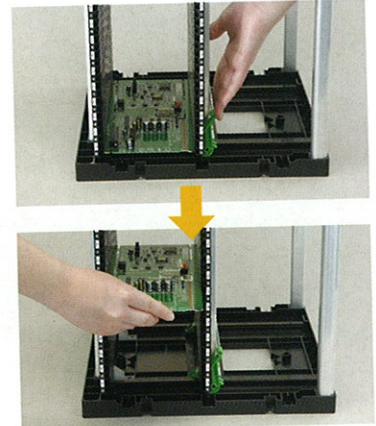
1

Place the PCB on the center of the base.



2

Slide the movable side towards the PCB until it cannot slide any further.



3

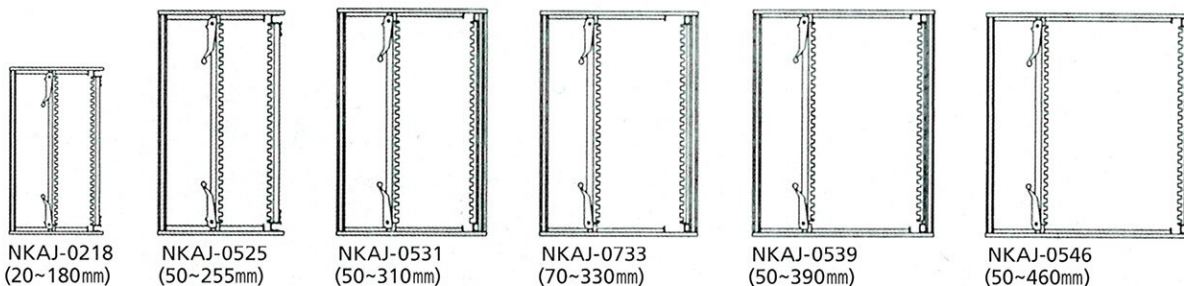
Lock all four levers and remove the PCB. The PCB will now slide smoothly into each rail with 1mm clearance.

■ Specifications (mm · kg)

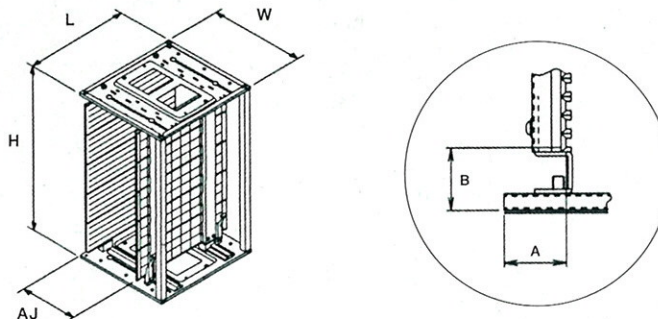
Model No.	Max Tolerant Temperature for the Cardguide	Outer Dimensions			Adjustable Width	Base Material	Ref. Position		Pitch P	PCB Slots	Weight (kg)	Size	Type
		L	W	H			A	B					
N25	60°C	355	320	563	50~250	Plastic	34	34	10	50	4.0	M	Reversible
R25	135°C	355	320	563	50~250	Plastic	34	34	10	50	4.0		Reversible
SR25	165°C	355	320	563	50~250	Plastic	34	34	10	50	4.0		Reversible
T25	135°C	355	320	581	50~250	Plastic	35	35	10	50	4.1		Stackable

*All standard models are shipped partially assembled. Complete assembly is optional. *All specifications are subject to change without notice.

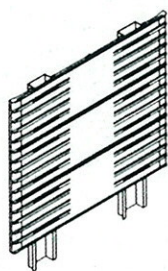
Our standard models can accommodate PCB widths from 20mm~460mm.



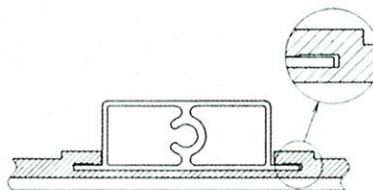
Magazine Dimensions



Patented Nikko-Rack Cardguides



The Nikko Rack cardguides are assembled in five separate sections to add both strength and to simplify ease of replacement if needed.



Each cardguide is attached to the supporting hat plate with designed tolerances that can absorb any stress thereby reducing warpage or bending.

Specifications (mm · kg)

Model No.	Max Tolerant Temperature for the Cardguide	Outer Dimensions			Adjustable Width	Base Material	Ref. Position		Pitch P	PCB Slots	Weight (kg)	Size
		L	W	H			A	B				
NKAJ-0211N-G	60°C	160	160	395	20~110	Metal	22.5	34	8	40	1.9	S
NKAJ-0211R-AL	135°C	260	165	270	20~110	Metal	20	34	4	50	1.6	
NKAJ-0218R-G	135°C	210	230	315	20~180	Metal	22	34	5	50	1.7	
NKAJ-0525N-G	60°C	355	320	563	50~255	Metal	34	34	10	50	5.1	M
NKAJ-0525N2-G	60°C	355	320	563	50~255	Plastic	34	34	10	50	3.7	
NKAJ-0525R-G	135°C	355	320	563	50~255	Metal	34	34	10	50	5.2	
NKAJ-0525SR-G	165°C	355	320	563	50~255	Metal	34	34	10	50	5.2	
NKAJ-0525R2-G	135°C	355	320	563	50~255	Plastic	34	34	10	50	3.8	
NKAJ-0525SR2-G	165°C	355	320	563	50~255	Plastic	34	34	10	50	3.8	
NKAJ-0531R-G	135°C	535	380	570	50~310	Metal	34	41	10	50	9.4	L
NKAJ-0531SR-G	165°C	535	380	570	50~310	Metal	34	41	10	50	9.4	
NKAJ-0531RE-G	120°C	535	380	570	50~310	Metal	34	41	12.5	40	11.4	
NKAJ-0531R 34*34-G	135°C	535	380	563	50~310	Metal	34	34	10	50	9.4	
NKAJ-0531SR 34*34-G	165°C	535	380	563	50~310	Metal	34	34	10	50	9.4	YL
NKAJ-0733N-G	60°C	460	400	565	70~330	Metal	35	35	10	50	8.8	
NKAJ-0733R-G	135°C	460	400	565	70~330	Metal	35	35	10	50	8.8	
NKAJ-0733SR-G	165°C	460	400	565	70~330	Metal	35	35	10	50	8.8	
NKAJ-0733N 34*34-G	60°C	460	400	563	70~330	Metal	34	34	10	50	8.8	
NKAJ-0733R 34*34-G	135°C	460	400	563	70~330	Metal	34	34	10	50	8.8	
NKAJ-0733SR 34*34-G	165°C	460	400	563	70~330	Metal	34	34	10	50	8.8	LL
NKAJ-0539R-G	135°C	535	460	570	50~390	Metal	34	41	10	50	10.5	
NKAJ-0539SR-G	165°C	535	460	570	50~390	Metal	34	41	10	50	10.5	
NKAJ-0539R 34*34-G	135°C	535	460	563	50~390	Metal	34	34	10	50	10.5	
NKAJ-0539SR 34*34-G	165°C	535	460	563	50~390	Metal	34	34	10	50	10.5	XL
NKAJ-0546R-G	135°C	535	530	563	50~460	Metal	34	34	10	50	12.3	
NKAJ-0546SR-G	165°C	535	530	563	50~460	Metal	34	34	10	50	12.3	
NKAJ-0525R-G400	135°C	400	320	563	50~255	Metal	34	34	10	50	6.8	
NKAJ-0531R-G400	135°C	400	380	563	50~310	Metal	34	34	10	50	7.7	
NKAJ-0733R-G400	135°C	400	400	563	70~330	Metal	34	34	10	50	7.8	

Note: G400 is equipped with corresponding 400mm-length cardguides. *All standard models are shipped partially assembled. Complete assembly is optional. *All specifications are subject to change without notice. *Please contact us regarding the customized reference position.